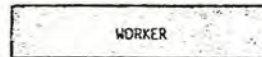


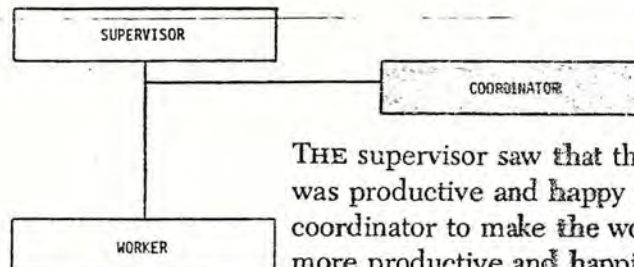
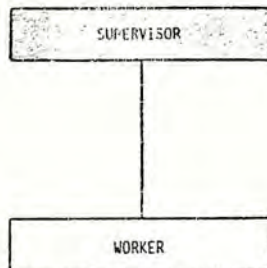
The happy worker

WILLIAM J. WARD, JR.

ONCE UPON A TIME in a company far, far away there was a worker. He was a productive, happy worker, but, alas, he was unsupervised.

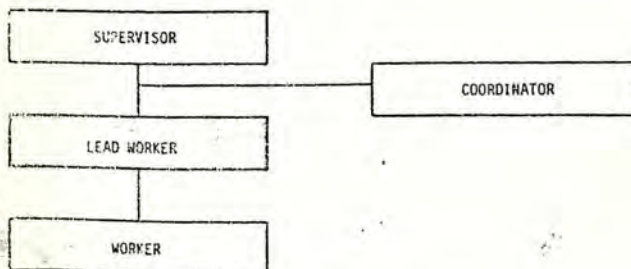


THE company saw that the worker was unsupervised and made a supervisor.

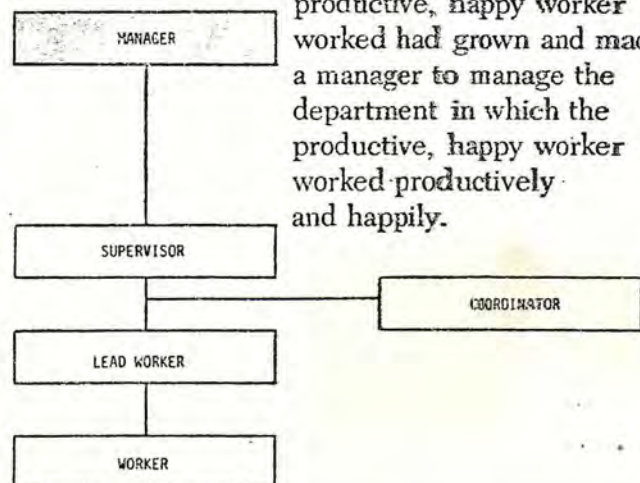


THE supervisor saw that the worker was productive and happy and made a coordinator to make the worker more productive and happier.

THE coordinator saw that the worker was productive and happy and made a "lead" worker to make the worker more productive and happier.



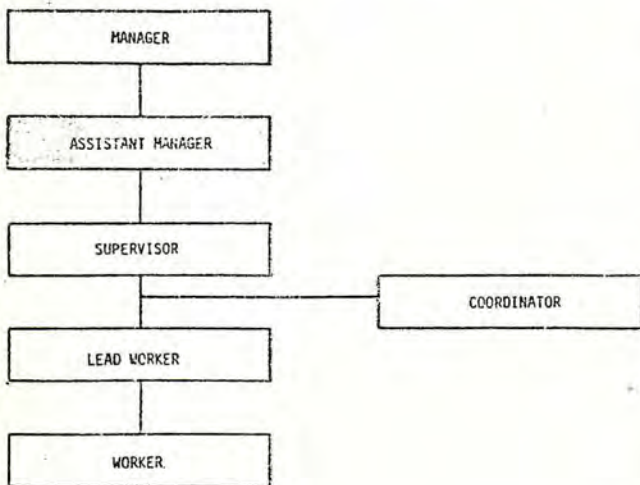
THE company saw that the department in which the productive, happy worker worked had grown and made a manager to manage the department in which the productive, happy worker worked productively and happily.



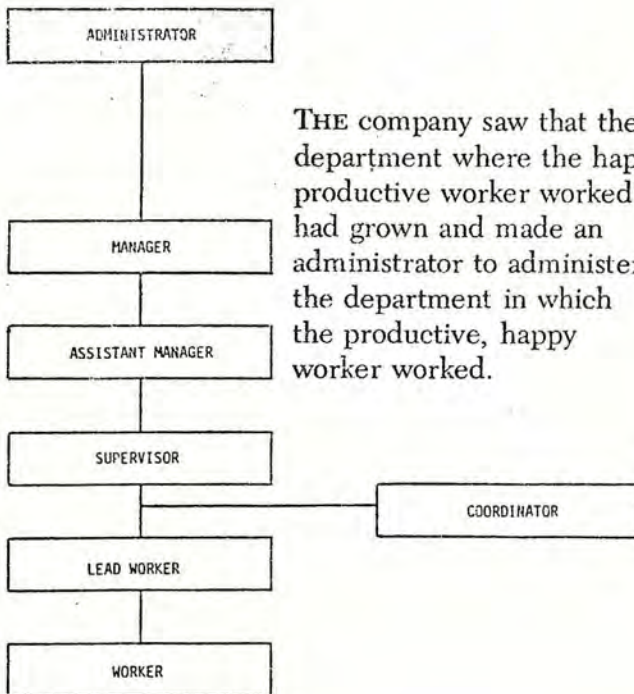
William J. Ward, Jr. is assistant administrator at The Johns Hopkins Oncology Center in Baltimore.

© 1982 AMA Membership Publications Division, American Management Associations. All rights reserved. 0025-1895/82/0007-0051\$01.50/0

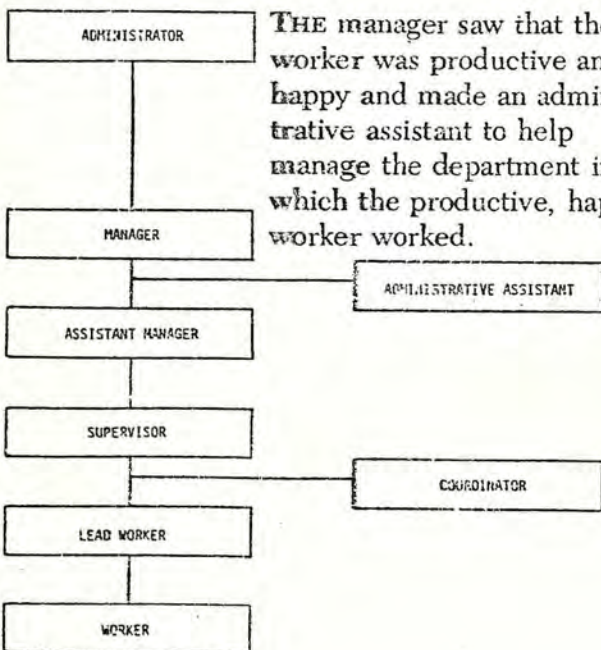
THE manager saw that the worker was productive and happy and made an assistant manager to help manage the department in which the productive, happy worker worked.



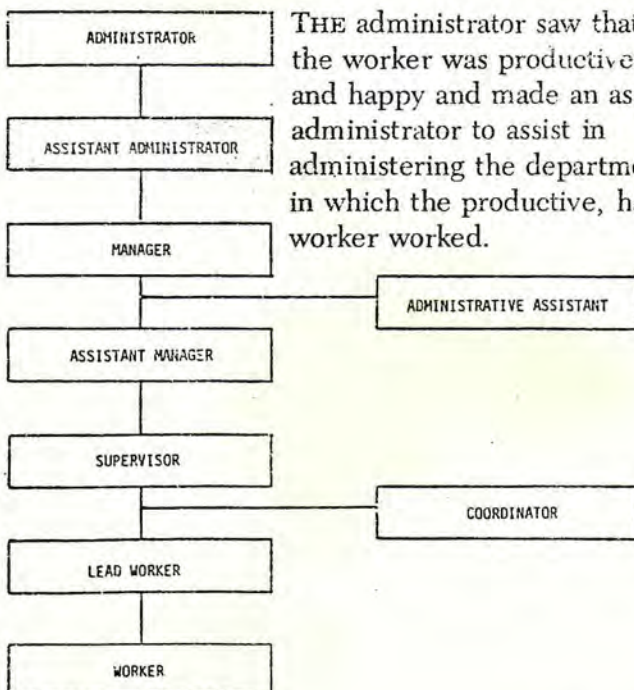
THE company saw that the department where the happy, productive worker worked had grown and made an administrator to administer the department in which the productive, happy worker worked.



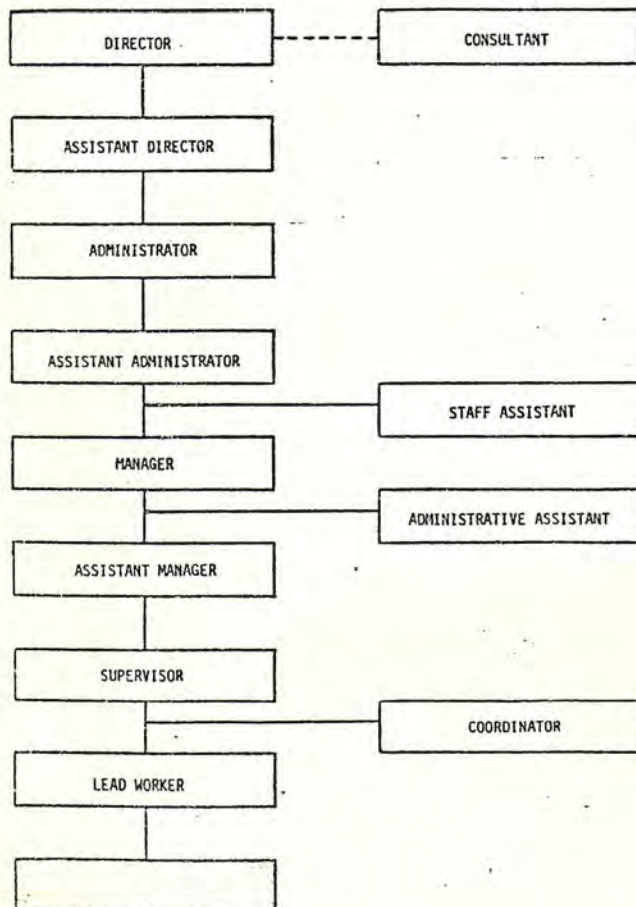
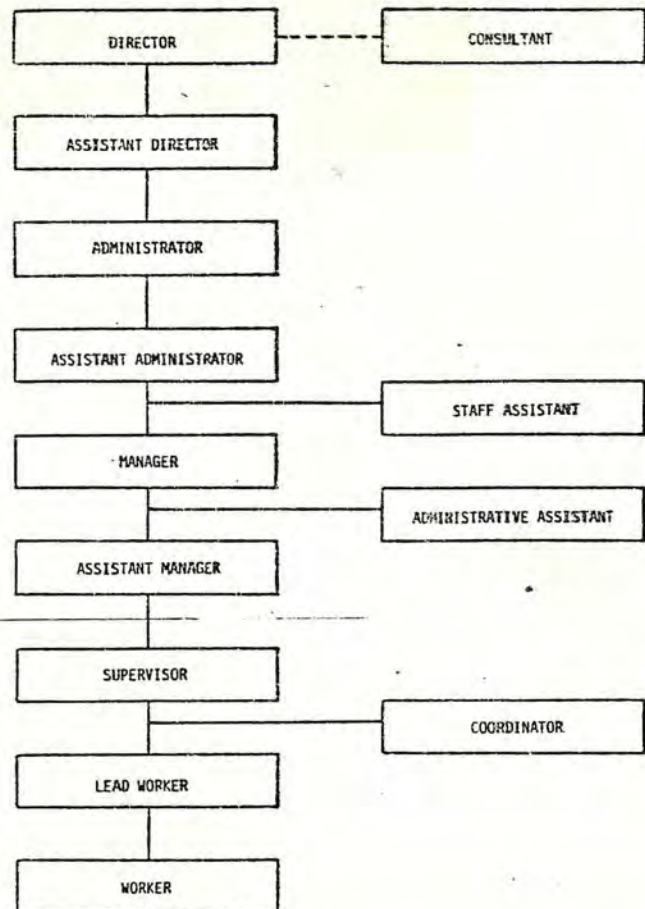
THE manager saw that the worker was productive and happy and made an administrative assistant to help manage the department in which the productive, happy worker worked.



THE administrator saw that the worker was productive and happy and made an assistant administrator to assist in administering the department in which the productive, happy worker worked.



MORE people were added until . . . The director saw that the department was losing money. So he consulted a consultant. The consultant examined the department in which the productive, happy worker worked productively and happily and advised "there are too many people" in the department in which the productive, happy worker worked.



AND the director paid heed to the counsel of the consultant . . . and fired the productive, happy worker.